



COMPANY

Data represents a critical resource for business continuity. Sensitive computing and telecommunications equipment needs a physical environment completely dedicated to data security. To allow them to concentrate on their core business, a growing number of companies are opting to outsource management of this environment while retaining control of their data.

The BrainServe data center meets these specific needs, thanks to an ideal location and a secure latest-generation infrastructure, managed and maintained on behalf of its clients.

BrainServe SA is an independent and non-listed limited company with a private shareholder structure, financing and management entirely from Switzerland. BrainServe's operations are subject to various audits and certifications, and the company has established a reputation for its quality, integrity and absolute discretion.

- ❖ Independent Swiss company
- ❖ Data center designed and constructed "from scratch"
- ❖ Controlled by the owner (dedicated plots and buildings)
- ❖ 24-hour operation, 365 days a year, by specialist on-site staff
- ❖ Location outside risk areas
- ❖ Highest level infrastructure (Tier IV)
- ❖ Data center audited according to ISAE 3402 Type 2 and FINMA Circ. 2018/3

LOCATION



Switzerland continues to be an outstanding location for the secure housing of data. The country's political stability, legal security, economic prosperity and working culture are recognized all over the world.

The Swiss Government has classified infrastructures for information and communication technologies and electricity supply at the highest level of criticality and has appointed a federal data protection and information commissioner. These actions demonstrate Switzerland's commitment to honoring its reputation as a "data banker".

BrainServe has chosen to locate its data center close to Lausanne, at the heart of the fastest-growing region in Switzerland. Situated around 50 kilometers from Geneva, it is an ideal backup site for the city while still allowing synchronous replication of data.

The area has a particularly favorable risk profile – in relation to civil, natural, industrial, transport and electromagnetic risks.

An electrical power station, with high power reserves, adjacent to the site guarantees a secure supply of electricity for the data center, including 100% renewable energy.

- ❖ Switzerland: the "data banker"
- ❖ Outside risk areas
- ❖ Guaranteed electricity supply
- ❖ Ideal backup site for Geneva



INFRASTRUCTURE & NETWORK

The BrainServe data center has been designed and constructed specifically to meet requirements for secure IT housing. BrainServe owns the dedicated plot and the actual data center, which was commissioned on April 1, 2011.

The building was constructed according to SIA-118 standards and the design of the technical installations has been certified as Tier IV by the Uptime Institute.

The technical features of the BrainServe data center (electricity, cooling, physical security) are detailed on our Fact Sheet.

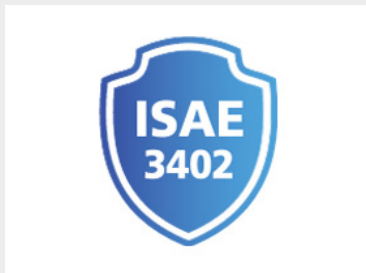
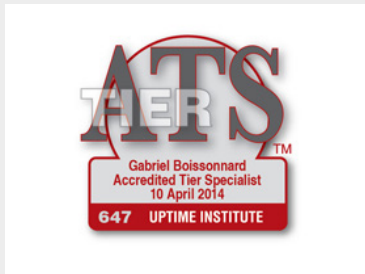
The data center's operations are based primarily on the ISO 20000 / ITIL standards.

In terms of energy efficiency, BrainServe follows the recommendations of various reference organizations in this area.

BrainServe manages its own connectivity by controlling a fiber optic network around Lausanne from its data center. This network covers all the main connecting points with the different backbones and third-party networks. BrainServe ensures connectivity with telecommunications operators by providing them with dedicated fiber optics ("last miles" and introductions) and housing areas within the data center's telecoms rooms. BrainServe applies a "carrier-neutral data center" policy.

- ◆ Latest-generation Tier IV data center
- ◆ Highly secure plot and building
- ◆ On-site presence 24 hours a day, 365 days a year
- ◆ Connectivity ensured

COMPLIANCE



MEMBERSHIPS





SERVICES

BrainServe offers its clients, consisting primarily of banks, international companies and IT service providers, housing spaces in the form of private rooms that can be customized in terms of size, power and equipment.

Colocation is available from IT service providers occupying one or more private rooms at BrainServe.

Shared working areas (meeting rooms, technical preparation room, storage room) and various local services (interventions, cabling, etc.) are, of course, available on request. BrainServe also supports clients looking for backup-workplaces (BCP).

All clients with private housing spaces receive a quarterly service review as well as a detailed monthly report covering factors such as compliance

with service levels, electricity consumption, access history and specific events.

An operations manual signed with each client sets out key points including roles, access conditions and the relevant contact persons.

BrainServe's operations focus on a key priority: total availability at controlled costs.

- ◆ Customized private rooms
- ◆ Colocation
- ◆ Work spaces
- ◆ Reporting & Review

IT PARTNER

BrainServe specializes in physical housing and works with trusted service providers to supply IT services to its clients. These services range from simple hosting to complete outsourcing, as well as cloud computing, managed services and migration support.

All of these recognized professionals, serving client bases spanning a vast range of business sectors, have one or more private housing rooms at the BrainServe data center where they offer services including colocation and connectivity.



www.alphosting.ch



www.alpinedc.ch



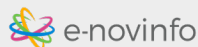
Votre partenaire informatique.
Aujourd'hui et demain!
www.bechtle.com



BRAIN UP YOUR IT
www.cortex-it.ch



Data First
Solutions d'hébergement sécurisé
www.dfi.ch



www.e-novinfo.ch



Edifice Communications
Creating sustainable solutions
www.edicom.ch



Datacenter - Virtual Server /
Desktop - Disaster Recovery
www.ironcloud.ch



Datacenter Services
www.isp-solutions.net



Your Applications Everywhere, Always
www.penta.ch



SMARTER IT for your business
www.sroperations.ch